



Carla Commisso-Kelvin M.A., CCC-SLP
 N.Y License#016040 C.T License#004056
 Carla@talkofthetownspeech.com

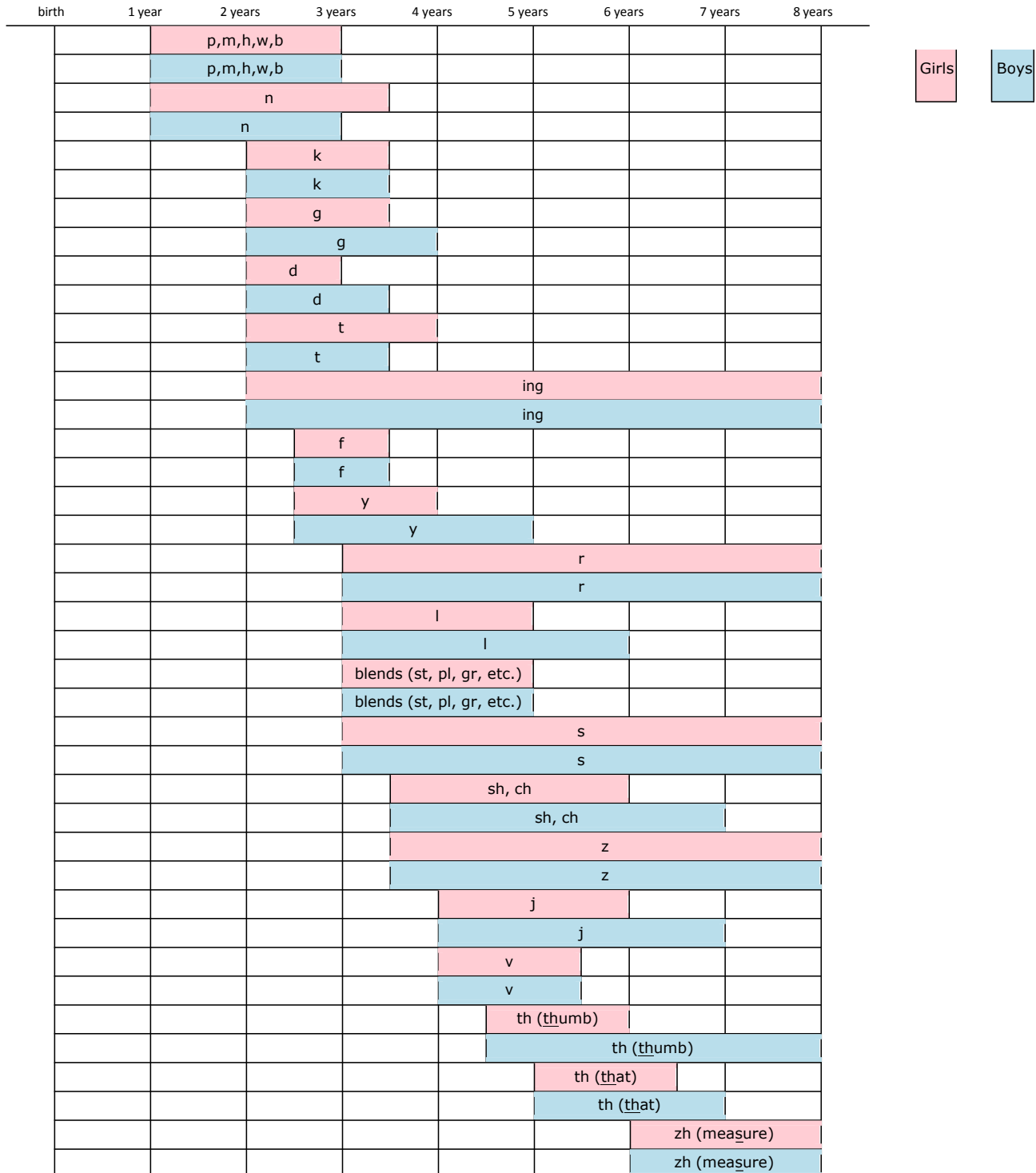
39 Smith Ave. Mount Kisco, NY 10549
 www.talkofthetownspeech.com

Shaina Rotstein, M.A., CCC-SLP
 N.Y License#017391 C.T License#003955
 Shaina@talkofthetownspeech.com

Ph: (914) 244-9600
 Fax: (914) 244-9601

Speech & Articulation Development Chart

In the chart below, each solid bar indicates when children generally MASTER the specified sounds. This chart depicts a range of development and should only be used as a general guide.



* Adapted from Sander JSHD 1972; Smit, et al JSHD 1990 and the Nebraska-Iowa Articulation Norms Project
 ©2003 Talking Child, LLC <http://www.talkingchild.com>; on ASHA website 12/2011